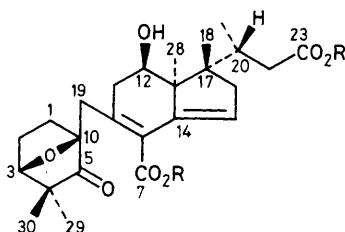


Corrigenda**Glycinoeclepin A, a Natural Hatching Stimulus for the Soybean Cyst Nematode**

Akio Fukuzawa, Akio Furusaki, Mitsuhiro Ikura, and Tadashi Masamune

J. Chem. Soc., Chem. Commun., 1985, 222.

On p. 222, the structure of glycinoeclepin A (R = H) should be as below.

**Visualization of Chromatography Columns by N.M.R. Imaging**

Laurance D. Hall and Vasanthan Rajanayagam

J. Chem. Soc., Chem. Commun., 1985, 499.In the caption to Figure 2, part (b), the value for P_1 should be 10 μ s.